

Education

An animal with eyes located on the side of its head has increased peripheral or side vision. This enables the animal to see predators approaching from the sides, as well as from behind. Many animals that are considered prey animals (those animal hunted by predators) have developed eyes located on the sides of their heads. Examples of prey animals include many herbivorous (plant-eating) animals such as rabbits, deer and cattle. These animals use their excellent peripheral vision to protect themselves from predators while grazing.

HORNS OR ANTLERS: Horns or antlers found on a skull bear evidence of how the animal defended itself, won mates and communicated. Animals can protect themselves or attack other animals by gouging them with their horns or antlers.

Horns are permanent structures that are retained year after year. Both male and female bovid animals may have horns. Antlers are temporary and are shed each year. With the exception of female caribou, only male deer have antlers. The massive, tightly curled horns of the mountain sheep and heavy horns of the muskox are used in ritual combat when the males fight for females.

As you can see, skulls can tell you a great deal about their owners.



*We Encourage Phone Orders
On All Of Your Skull Request*

Phone: 1-800-659-SKULL
or 1-405-794-9300

Monday-Friday 8:00 A.M. to 5:00 P.M. C.S.T.

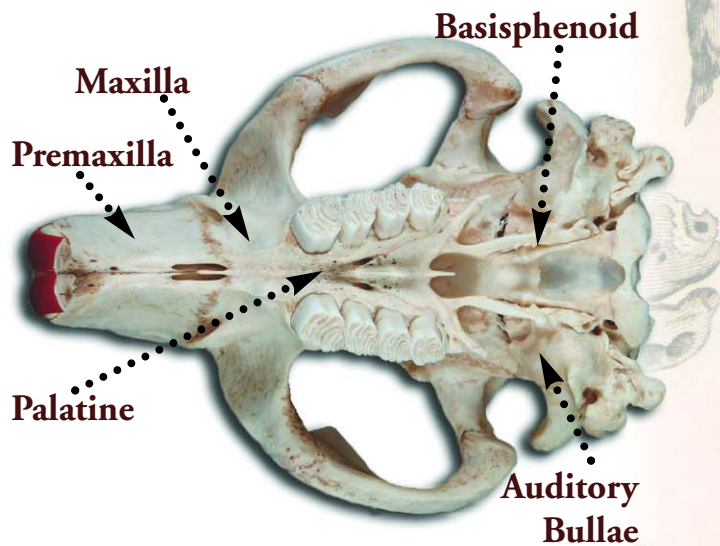
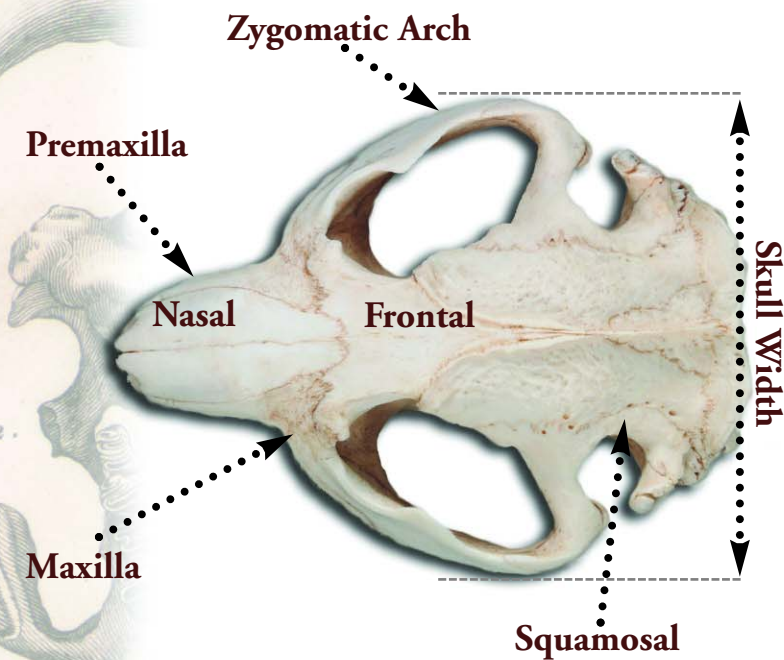
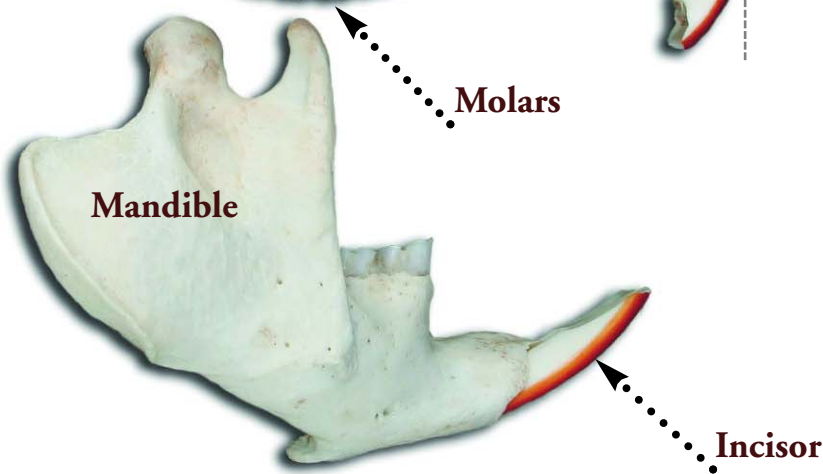
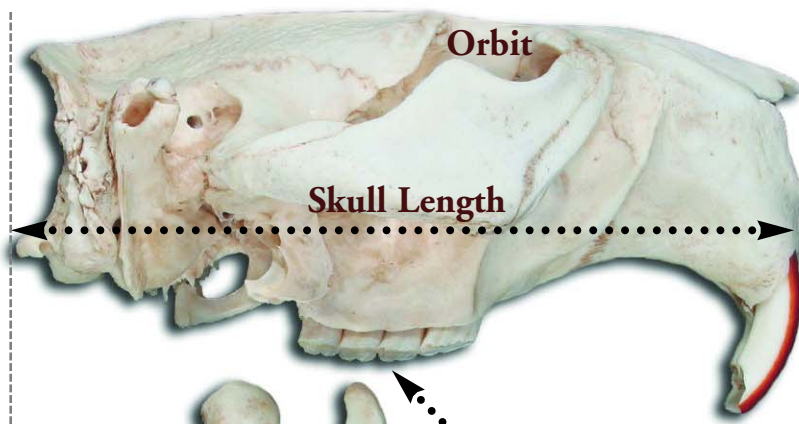
or

you may fax your order to
1-800-676-5459 or 1-405-794-6985

24 hours a day.

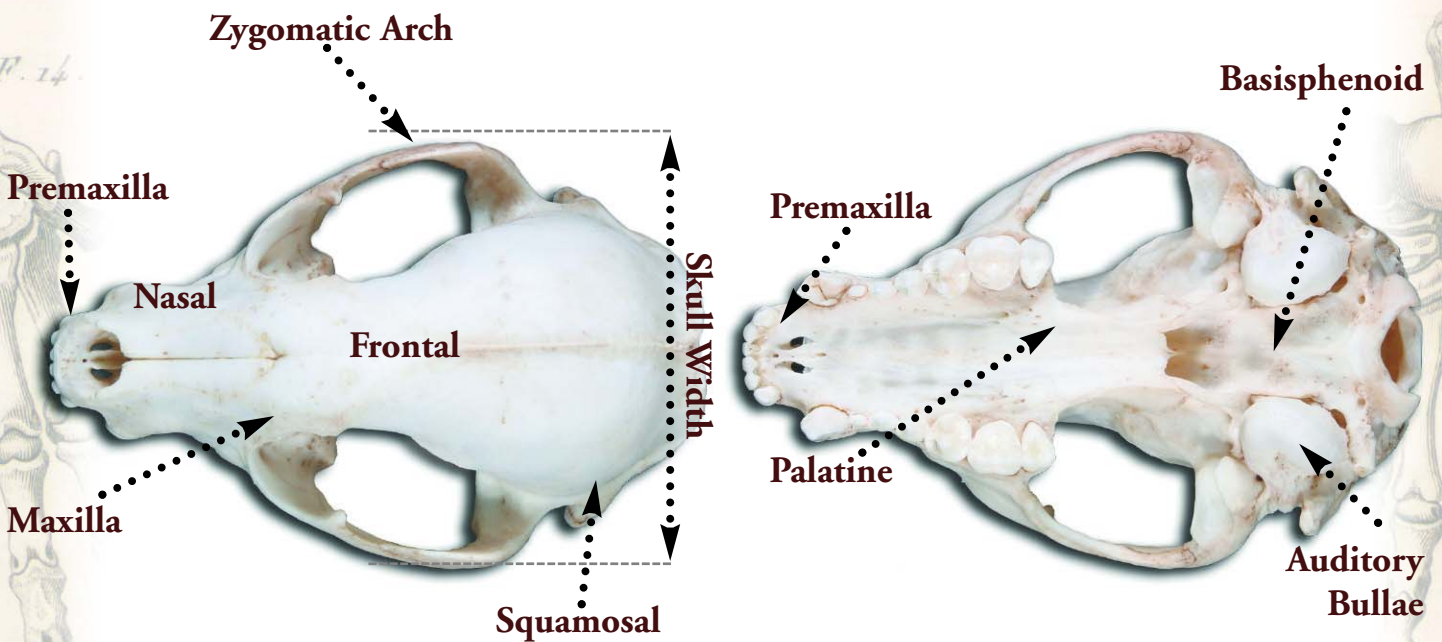
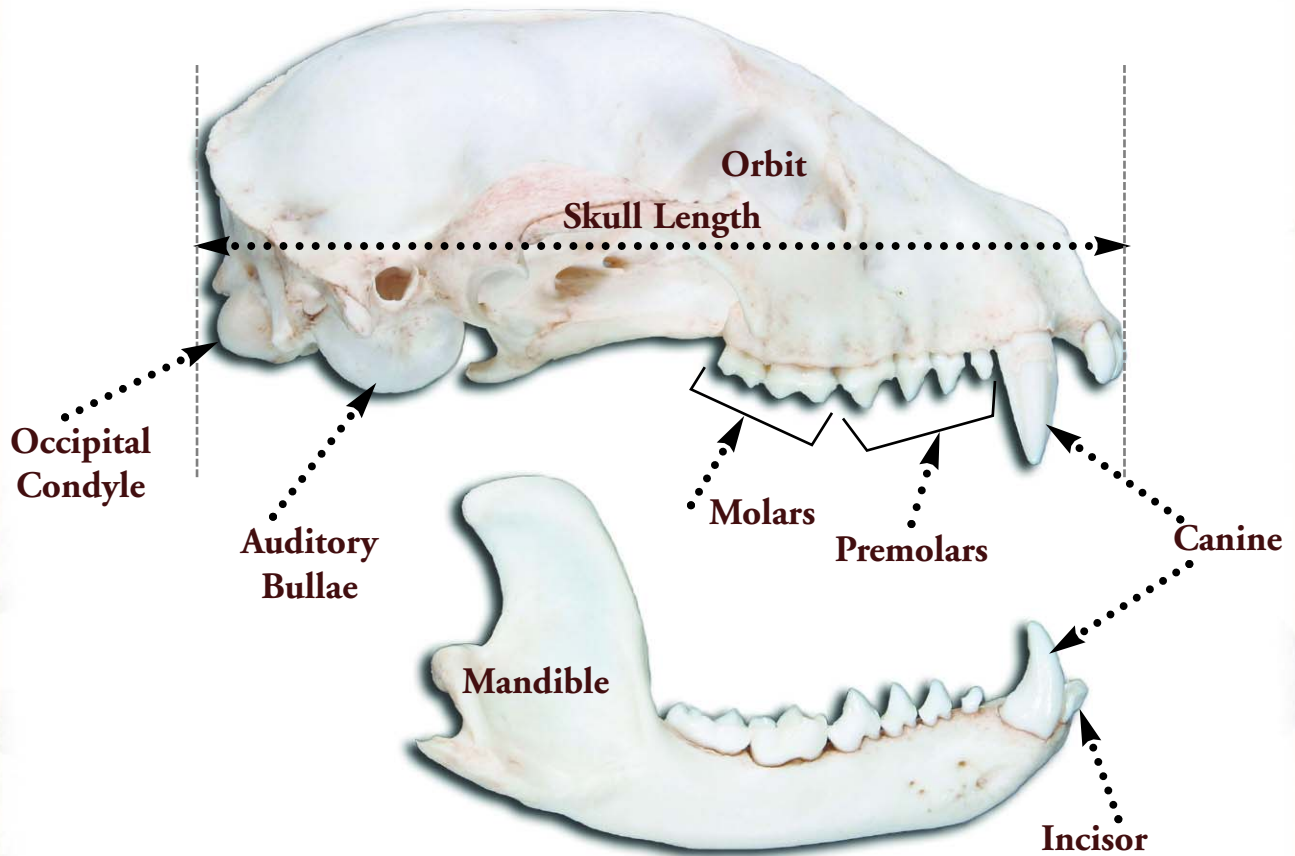
Education

Beaver Skull - Herbivore



Education

Raccoon Skull - Omnivore



Education

Bobcat Skull - Carnivore

